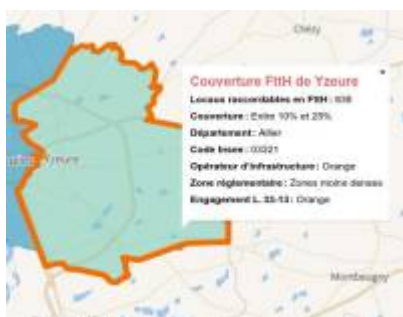


# Terrestrial Fibre Optic Networks

## ARCEP France

The French communication regulator ([ARCEP](#)) maintains a [detailed map](#) of FTTH deployments which allows for the visualisation of the coverage of municipalities by FTTH networks. Clicking on a municipality, reveals detailed coverage information for the municipality in question down to the household level. When the map is zoomed to the neighbourhood level, the addresses listed by the different infrastructure operators are displayed, represented by a dot, the colour of which varies according to the progress of the deployment.



This map is published by ARCEP in order to improve information for the general public and professionals on the deployment of fibre optic networks to the subscriber. Established both at the municipal level and at the technical level (generally at the sub-municipal level), it is part of the Authority's fixed broadband and very high speed observatory and is accompanied by the publication of the underlying data in open data.

Operators provide ARCEP with detailed data on their deployment of fibre optic networks. ARCEP aggregates the data obtained using INSEE geographical codes to obtain an absolute number of premises per municipality that can be connected to the FTTH network. All of the underlying data is part of the government's Open Data initiative and is [available for download](#) so that it might be integrated with other resources by researchers or entrepreneurs.

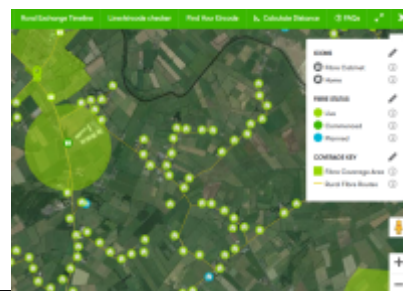
## Dark Fibre Africa

[Dark Fibre Africa](#) maintain a detailed map of their South African fibre optic network [online](#). They used to have a downloadable KML version of the map on their website but a link to that has been removed. They maintain their map on an ArcGIS enterprise server which can be accessed via a [public API](#), making it available to other GIS applications. It isn't clear whether this is intentional or not.



## Open EIR

[Open EIR](#) is the former state-owned telecommunications monopoly in Ireland. They publish a [detailed public map](#) of their fibre network roll-out right down to details of the fibre cabinet, fibre routes, connected buildings, and planned connection. The map is overlaid by default of a Google satellite view background which makes for an impressively detailed map.



# Liquid Telecom

Pan African fibre optic network operator [Liquid Telecom](#) maintain a [map of their fibre network](#) on their website. While this map is generally helpful, it doesn't display point of presence, nor does it reveal the specific routes that the fibre follows. This is one step up from not displaying a coverage map at all but falls short of being useful for strategic planning.



From:

<https://policy.communitynetworks.group/> - **Policy and Regulation for Community Networks**

Permanent link:

<https://policy.communitynetworks.group/good-practice/fibre?rev=1544201255>

Last update: **2018/12/07 12:47**

