

Terrestrial Fibre Optic Networks

Examples of Good Practice

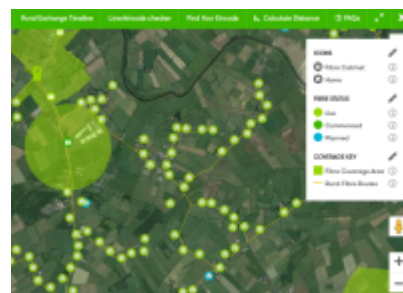
Dark Fibre Africa

[Dark Fibre Africa](#) maintain a detailed map of their South African fibre optic network [online](#). They used to have a downloadable KML version of the map on their website but a link to that has been removed. They maintain their map on an ArcGIS enterprise server which can be accessed via a [public API](#), making it available to other GIS applications. It isn't clear whether this is intentional or not.



Open EIR

[Open EIR](#) is the former state-owned telecommunications monopoly in Ireland. They publish a [detailed public map](#) of their fibre network roll-out right down to details of the fibre cabinet, fibre routes, connected buildings, and planned connection. The map is overlaid by default of a Google satellite view background which makes for an impressively detailed map.



Liquid Telecom

Pan African fibre optic network operator [Liquid Telecom](#) maintain a [map of their fibre network](#) on their website. While this map is generally helpful, it doesn't display point of presence, nor does it reveal the specific routes that the fibre follows. This is one step up from not displaying a coverage map at all but falls short of being useful for strategic planning.



From:

<https://policy.communitynetworks.group/> - **Policy and Regulation for Community Networks**

Permanent link:

<https://policy.communitynetworks.group/good-practice/fibre?rev=1543251621>

Last update: **2018/11/26 17:00**

